

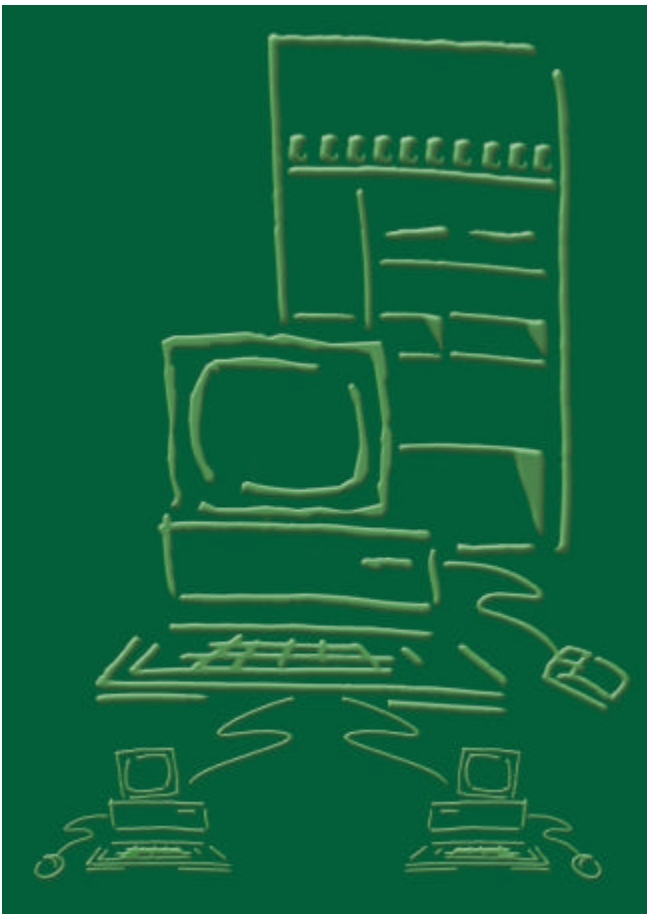
ES/Server™

Twinax Gateway

Now available for ISA or PCI

ES/Server – is a powerful, flexible, Twinax Gateway for AS/400, Sys/36 and Advanced 36s. Allows sharing Twinax 5250 Display and Printer sessions across Ethernet or Token Ring Networks.

The easiest way to connect your network to a Twinax host. ES/Server solution uses a twinax connection to the IBM Midrange host through a server PC that is used as a gateway. The seven twinax sessions (per ES/Server card) are then shared across the network, using any of the three most popular protocols.



ES/Server supports the protocols you already have, so your configuration is much easier than installing multiple protocols. Unlike other twinax gateways, the ES/Server does **not** require the complexity of an APPC router configuration.

Use up to four ES/Server adapters in the gateway PC to provide up to 28 display and printer sessions to your network PCs.

Great Emerald Series usability. Customizable session properties allow users to set the presentation in the most productive way. Choose the most pleasing font, change colors to highlight important fields, set up Macros to automatically run repetitive tasks, make Hotspots (clickable fields) visible and create custom tear-away toolbars.

- Supports multiple protocols: TCP/IP, IPX or NetBEUI networks.
- Available with advanced PCI (PnP) or ISA (No IRQ required) based Twinax adapters.
- Supports Windows 95, 98, NT, ME and 2000.
- Direct-connect or network-attached printers become host printers. Includes Autorotate, Autosize and Host Transform functions.
- ETU File Transfer Support.
- Session Pooling for access to multiple ES/Gateways or sessions.

ES/Server Gateway Technical Specifications

Part Numbers:

ES/Server PCI Gateway 301-9602-02
ES/Server ISA Gateway 301-9602-01

The ES/Server Package:

- ES/Server Twinax Adapter (ISA or PCI)
- ES/Server Software (CD ROM)
- ES/Client Software (CD ROM)
- Twinax T-Connector
- Installation Guide (Hard copy and on CD)

Regulatory Approval:

FCC, CE

IBM Devices Emulated:

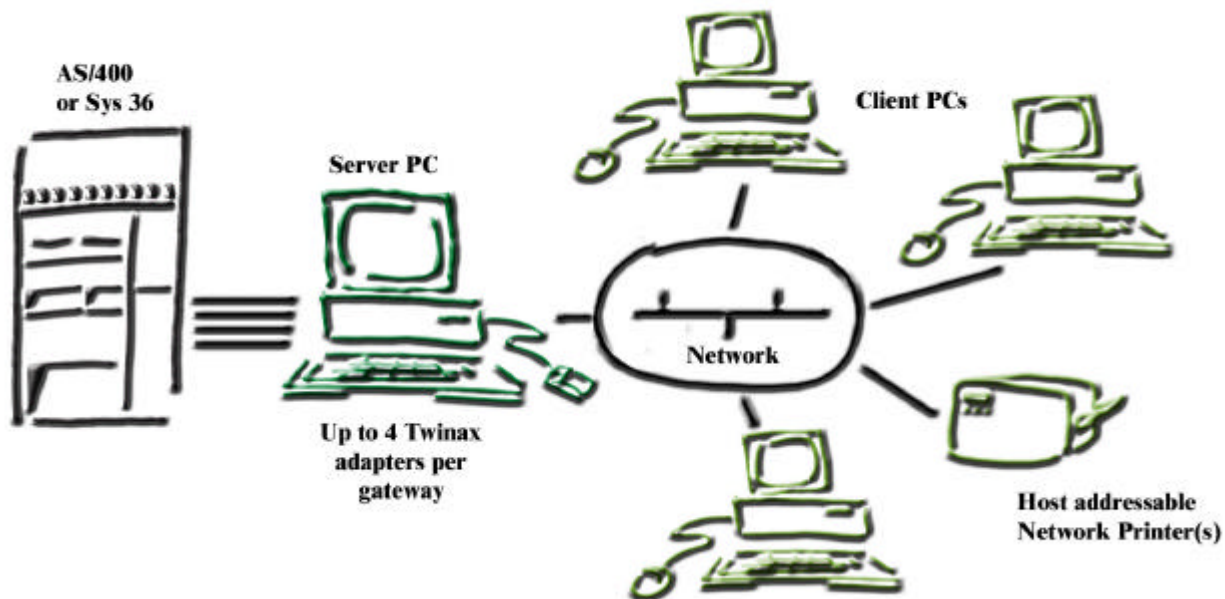
- Host Displays (80 or 132 column, mono or color): 5251-11; 5291-1,2; 5292-1; 3179-2; 3180-2; 3196-all; 3197-C,D
- System Printers:
3812, 5219, 4214, 4210, 5225, 5224 or 5256

Server PC System Requirements:

- PC with 486, Pentium® or higher processor
- CD ROM drive
- Hard disk with 8MB space available
- PCI or ISA expansion slot
- Minimum of 8MB of available memory
- Windows 95, 98, NT (4 or above), ME or 2000
- Network connection with IPX/SPX, NetBEUI or TCP/IP protocol.

Client PC Requirements:

- PC with 486, Pentium® or higher processor
- CD ROM drive
- Hard disk with 6MB space available
- Minimum of 8MB of available memory
- Windows 95, 98, NT (4 or above), ME or 2000
- Network connection with IPX/SPX, NetBEUI or TCP/IP protocol.



The Americas

Headquarters
NLynx Systems, Inc.
8313 Hwy 71 West
Austin, TX 78735
Tel: 512 301-8000
Sales: 800-328-2696
Fax: 512-301-8195

International

NLynx Systems, Ltd.
4th Floor, The Graftons
Stamford New Road
Altrincham
Cheshire WA14 IDQ
United Kingdom
Tel: 44 (0) 161 928 7014
Fax: 44 (0) 161 928 7015

www.nlynx.co.uk

sales@nlynx.co.uk

