

Gemini Express Fiberoptic Multiplexer for IBM System/3x and AS/400



- Up to 56 devices supported from two controllers on a single pair of Fiber Optic cable
- The *only* fiber optic multiplexer that supports split-polling (200% speed improvement — dual option) on enhanced AS/400 WSCs
- Direct DB25 workstation controller connection on rear panel
- Compatible with *Express* and standard data rates.
- Automatic data rate detection
- Advanced noise suppression on all ports
- Does not require performance-robbing PTFs to function
- Extends AS/400 ports up to 15,000' on multi-mode fiber optic cable
- Supports both "point to point" and "multipoint" applications
- Polarity insensitive as long as host and device balun polarities are the same
- Field-replaceable universal voltage power supply
- Shielded RJ45 with any active pin configuration

 **DecisionData**
MIDRANGE & MAINFRAME SOLUTIONS

0161 928 7014

www.nlynx.co.uk

Get Maximum Throughput Potential with the Gemini Express Multiplexer

Decision Data's eight-port, fiber-optic Gemini Express Multiplexer offers the unique ability to allow up to two AS/400 controller polling groups to be transmitted over a single fiber optic pair. Controller redundancy and maximum fiber optic efficiency are obtained by multiplexing four ports each from up to two separate controllers for a total device capacity of 56 — the highest in the industry. This feature also allows all new AS/400e controllers to provide their maximum throughput potential, in either 1Mbps Optimized or 2Mbps Express mode, by transparently multiplexing the split-polling feature without requiring performance-robbing PTFs. All new IBM controllers support the split-polling feature as a means of achieving higher throughput rates, even when connected to standard legacy devices. The Gemini Express Multiplexer allows the split-polling feature to remain enabled with performance of up to 4 times greater than standard legacy 1Mbps 5250 protocol.

Eliminate Old Twinax Bricks and Twinaxial Cabling

The Gemini Express Multiplexer has eight shielded RJ45 port connections as well as a DB25 direct-connection eliminating the need for the twinax brick and associated twinaxial cabling. Link connectivity is via ST fiber optic multi-mode connection with ability to operate in both point-to-point and multi-point ring topologies, reducing hardware requirements by up to 50%.

Other Features

Other features include Advanced Noise Filtering, LED Port Diagnostics, Configurable UTP Pin Assignments, and a Field Replaceable wide-ranging Power Supply.

All specifications stated herein are subject to change without notice. All other trademarks are property of their respective companies. ©2002 by NLynx Technologies, Inc.

Specifications

Number of Ports:	8
Data Rate:	1 or 2 MBPS IBM 5250 protocol
Nominal input impedance:	100 ohms
Interface:	Shielded RJ45 and DB25
Fiber Optic Connectors:	ST
Active Pair:	Port Configurable

Distances

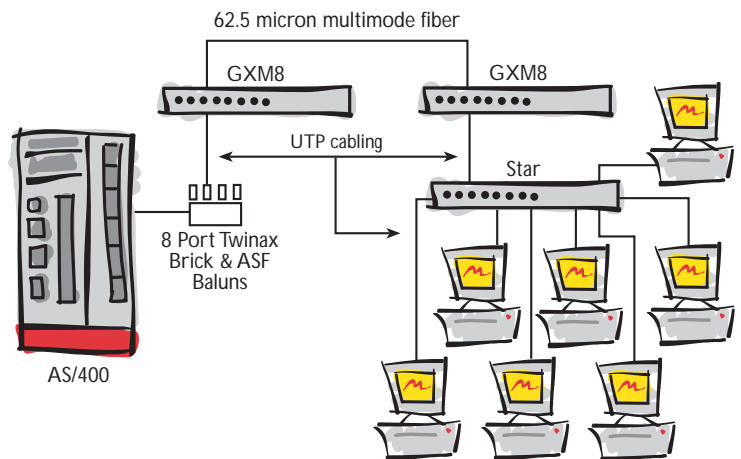
Controller to Gemini multiplexer:	Up to 2000 ft.
Gemini multiplexer to Device:	Up to 2200 ft.
Fiber Optic Link:	Up to 6600 ft.
Fiber Optic Budget:	12 dB (typical)
Diagnostic LEDs:	Power, port activity & mode
Power:	100-240VAC to +5VDC external power supply

Temperature

Operating:	0 to 40 C
Storage:	0 to 85 C
Humidity:	95% non-condensing
Dimensions:	19" X 8.75" X 1.75" (1U)
Manufacturer:	Decision Data
Warranty:	Three years

Ordering Information

Part No.	Description
301-2313-01	Gemini Express 8 port multiplexer with shielded RJ45s and DB25



United States
Headquarters
NLynx Technologies, Inc.
8313 Hwy. 71 West
Austin, Texas 78735
Tel: 512-301-8000
Sales: 800-328-2696
Fax: 512-301-8030
www.nlynx.com
sales@nlynx.com

MULTIPLXR-001-US

International
4th Floor, The Graftons
Stamford New Road
Altrincham
Cheshire WA14 1DQ
UNITED KINGDOM
Tel: 44 (0) 161 928 7014
Fax: 44 (0) 161 928 7015
www.nlynx.co.uk