



# OmniTerm/ES Host Access software

NLynx Ltd Host Access Software, OmniTerm/ES, is a Windows-based terminal emulation suite designed for communication to IBM mainframe, System i (AS/400 & iSeries), and Unix applications. Included are robust TN3270, TN5250, VT420 and Twinax clients.

NLynx Ltd specialises in advanced host access solutions (IP and Twinax), for Microsoft Windows desktops, servers, and Embedded systems, including Windows 95/98, NTx, 2000, 2003, XP, Vista 32 and 64 bit, and Embedded CE and XPe systems.

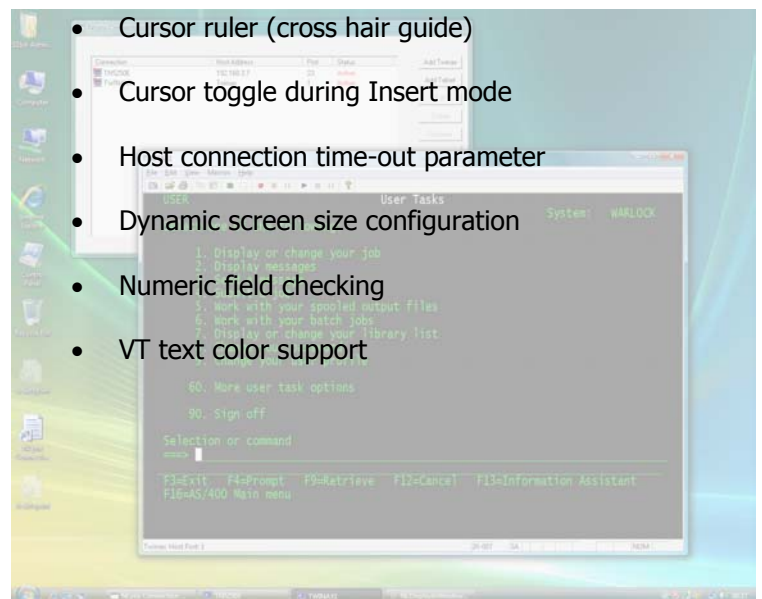
Microsoft Windows Vista 32/64 bit compatible drivers are available for use in conjunction with the NLynx PCI Twinax board and OmniTerm/ES.

## MAJOR FEATURES

- Provides access to System i (AS/400 & iSeries), IBM mainframe and UNIX® host applications
- Includes TN3270, TN3270E, TN5250, TN5250E, VT420 and Twinax clients
- File transfer utility, **E**(mulator)**T**(ransfer)**U**(tility)
- Small footprint
- Host printing through TN5250E/Twinax clients
- Macro run, record, and edit to automate routine functions
- Secure Socket Layer (SSL) security for IBM AS/400 access
- International Keyboard (Dead key), Display and Currency symbol support

## GENERAL FEATURES

- Open, Save and Create new session configurations
- Full screen for host display
- Extended attributes provide 7 colour display, underline, reverse video
- Configurable window title
- Font size automatically adjusts to Window size
- Colours can be modified for base and extended colours, and screen background
- Colour schemes for screen display
- Copy and paste text
- Hotspots, show and hide, enable and disable
- Keyboard customisation
- Underline and Block cursor
- Cursor blink (block or underline)



## NLynx Ltd

4<sup>th</sup> Floor, The Graftons  
Stamford New Road  
Altrincham, Cheshire  
WA14 1DQ  
United Kingdom  
Tel: +44 (0) 161 928 7014  
Fax: +44 (0) 161 928 7015  
[www.nlynx.co.uk](http://www.nlynx.co.uk)



## Components

- TN3270 Terminal Emulator
- TN5250 Terminal Emulator
- VT420 Terminal Emulator

## Host Systems

- IBM zSeries (S/390) mainframe
- IBM System i (AS/400 & iSeries) midrange
- UNIX® host systems

## System Requirements

- Windows Vista, XP, 2000, NT4 Desktop
- Minimum of 16 MB memory
- 8 MB disk space
- Windows Sockets version 1.1 or higher
- TCP/IP connection to TN3270, TN5250 or Telnet server

## Connection Features

- Auto Reconnect
- Telnet Device Type Override
- Dynamic screen size configuration
- Full support for NVT, SSCP-LU, and LU-LU sessions
- Host connection time-out parameter
- TN3270E Responses enable/disable feature
- Keep Alive Feature

## Security

- Secure Socket Layer (SSL) security (optional for IBM System i access)

## Terminals Emulated

- IBM 3278, 3279 models 2, 3, 4 and 5
- IBM 5250 model 2 and 5
- IBM 3179-2 model 2
- IBM 3477-FC model 5
- VT100, VT220, VT420

## Display Session Features

- Print Screen
- Host screens can be printed to local or LAN attached printers
- Host screens can be printed to a disk file

## Fonts and Screen Sizes

- Any Windows fixed pitch raster or true type font can be selected
- Font size automatically adjusts to Window size
- Screen sizes for TN3270 (24x80, 32x80, 43x80, 27x132)
- Screen sizes for TN5250 (24x80, 27x132)
- Screen sizes for VT (24x80, 24x132, 32x80, 32x132)

## International Support

- International host code pages
- Multi-national keyboard support

## Clipboard

- Copy and Paste
- Text selection viewed as dotted rectangle

## Colours

- Multiple colour schemes can be created and saved
- Colours can be selected from the Windows colour palette
- Colours can be modified for base and extended colours, and screen background
- Extended attributes provide 7 colour display, underline, reverse video

## Cursor

- Underline or block cursor
- Cursor blinking on or off
- Cursor ruler guide can be a full cross hair, vertical only or horizontal only
- Cursor toggle during Insert mode
- Cursor position shown on Windows status bar

## Hotspots

- Ability to click specific text on the screen to perform a function
- Default hotspots provided for PF keys and other common host keys
- Hotspots can be viewed as reverse video or invisible

## Keyboard Features

- Interactive keyboard customization
- Multiple keyboard maps can be created and saved
- Assignment of any emulator function including macros to any key
- Type ahead
- Jump directly to a session using keyboard keys
- Ability to view list of all host keys with current key mapping

## Mouse

- Drop down menu support using mouse button
- Pop-up floating menu to access common menu commands

## Keyboard Support

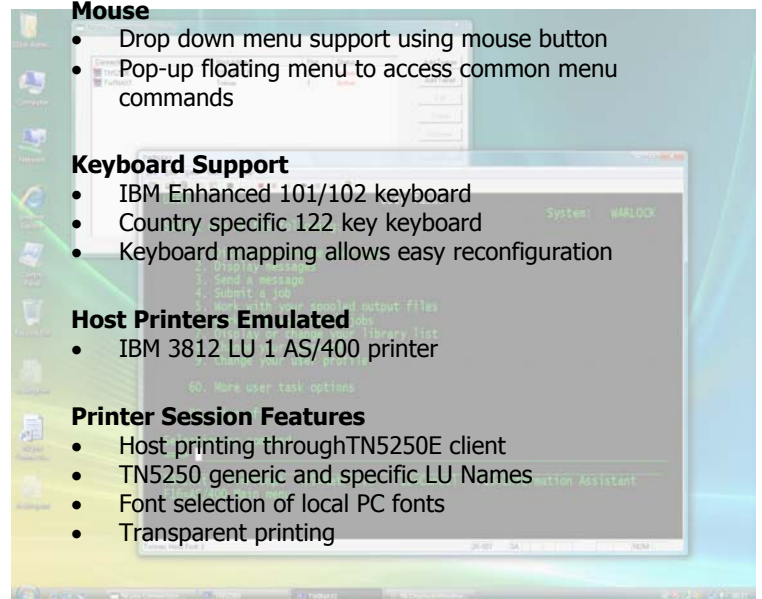
- IBM Enhanced 101/102 keyboard
- Country specific 122 key keyboard
- Keyboard mapping allows easy reconfiguration

## Host Printers Emulated

- IBM 3812 LU 1 AS/400 printer

## Printer Session Features

- Host printing through TN5250E client
- TN5250 generic and specific LU Names
- Font selection of local PC fonts
- Transparent printing



## Nlynx Ltd

4<sup>th</sup> Floor, The Graftons  
Stamford New Road  
Altrincham, Cheshire  
WA14 1DQ  
United Kingdom  
Tel: +44 (0) 161 928 7014  
Fax: +44 (0) 161 928 7015  
[www.nlynx.co.uk](http://www.nlynx.co.uk)

