

# OmniTerm/XPe

## The customisable Windows Based Terminal

- OmniTerm/ XPe leverages the versatility and flexibility of the Microsoft® Windows XP Embedded operating system.
- OmniTerm/XPe can be tailored to fit the Enterprise specific needs and requirements with the addition of XP compatible applications which can be executed locally. This capability makes OmniTerm/XPe the ideal solution for the Enterprise.
- OmniTerm/XPe can be fully integrated within a Microsoft® network and controlled by the domain servers.
- OmniTerm/XPe includes the Citrix's ICA and Microsoft's RDP clients and TermPro, our terminal emulation suite for the IBM AS/400, IBM Mainframe and UNIX hosts. Integration of Internet Explorer 6 and Outlook Express provides full access to the Internet/Intranet and Email.
- OmniTerm/ XPe's fully functional USB ports accept a variety of peripheral devices such as WiFi devices, CD Rom readers, Floppy drives, memory "keys"...
- OmniTerm/XPe optionally features a PCMCIA port.



OmniTerm/XPe is a powerful Windows Based Terminal taking full advantage of the flexibility and modular structure of Microsoft's Windows XP Embedded operating system.

### Versatile server connectivity

The integrated Microsoft® RDP and Citrix® ICA clients provide the users with a seamless connection to the Enterprise's Windows servers.

The NLYNX® printer and terminal emulation suite, **TermPro**, provides efficient connections to the IBM AS/400, Mainframes, RISC 6000 and other UNIX hosts such as HP9000.

The users can concurrently access various host systems (IBM, Microsoft or UNIX).

### Internet/Intranet access and Email

The built-in Internet Explorer 6.0 browser allows Web or Intranet access either directly or through a proxy. A Java Virtual Machine (JVM) is included and the administrator can add optional Internet Explorer plug-ins. Acrobat Reader™ is pre-installed in OmniTerm/XPe together with Outlook Express™.

With Outlook Express™ users have direct access to their corporate Email.

### Security

OmniTerm/XPe automatically starts up under a restricted user profile. The default user has no authorisations to change a configuration or to create new emulation, RDP or ICA sessions.

As a member of a Microsoft network, OmniTerm/XPe can be tightly controlled by the authentication and domain servers and will follow the security policies implemented within its domain.

### Control

"OmniTerm Remote Control and Administration" (**ORCA**) is powerful SNMP based software which can be used to manage your NLYNX WBT family of terminals. With ORCA, and from your PC, you can discover and manage all the OmniTerm/XPe on your network as well as your OmniTerm/wbt and OmniTerm/w500.

Additionally, **ORCA** automatically maintains a database of the installed units and features the possibility to remotely take control over each individual terminal using shadowing techniques.

### Network

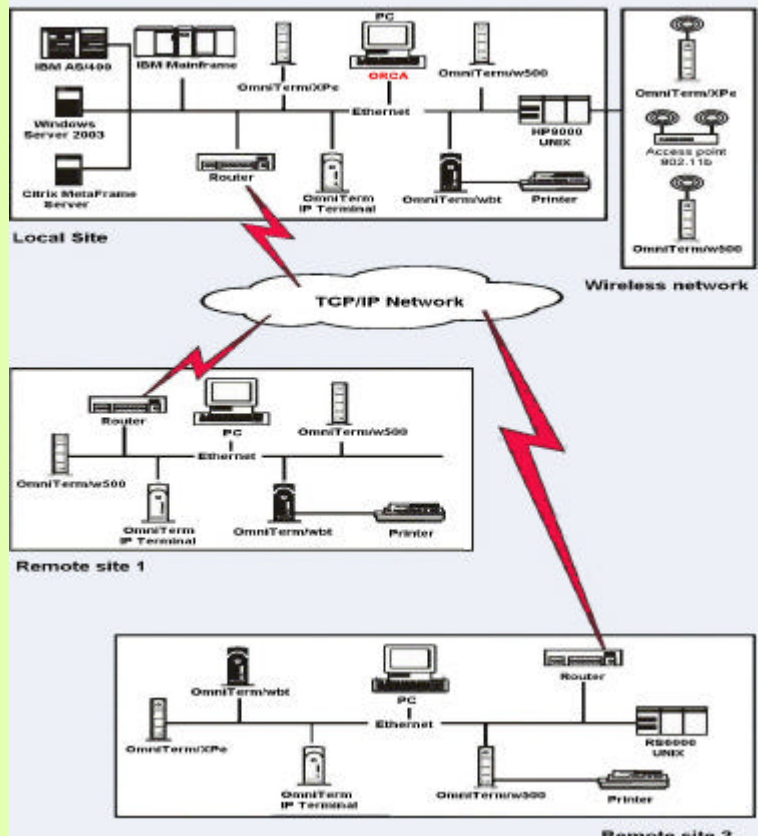
OmniTerm/XPe is connected to the Enterprise's network via its built in 10/100 MBps network interface or via an **IEEE 802.11x, WiFi** \* wireless connection.

### Customisation examples\*\*

Netscape®, Qualiparc® client (asset management and amortization software), integration of software authentication key, installation of Word, Excel, Power Point viewers.

\* Optional.

\*\* These customizations are example to illustrate the flexibility of the product, they are not included in OmniTerm/XPe.



# NLYNX

4th Floor, The Graftons, Stamford New Road, Altrincham, Cheshire. WA14 1DQ  
Tel : +44 (0) 161 928 7014 Fax : +44 (0)161 928 7015

[www.nlynx.co.uk](http://www.nlynx.co.uk)

## Operating system

Windows XP Embedded.

## Terminal emulation

### Integrated suite, Nlynx TermPro.

- \* TN5250 (Displays: 3477FC, 3477FG, 3180-2, 3179-2, 3196-A1, 5292-2, 5291-1, 5251-11; printer 3812-1).
- \* TN3270 (Displays: 3278-2E, 3E, 4E, 5E; printer 3487-1).
- \* ASCII (IBM 3151-31, VT100, VT220, VT320, VT420, ANSI-BBS, SCO-ANSI, Wyse 50, Wyse 60).

TermPro supports Hot Spots, full screen, keyboard remapping and assignment of specific key sequences to the function keys.

## Windows terminal

### Citrix ICA Version 6.3 protocol.

- \* LAN or modem connection to the Citrix server.
- \* Automatic login.
- \* Supports locally or LAN attached printers with detection, configuration and automatic connection of the printer by the ICA server.
- \* Print to LAN attached printers.
- \* Audio support.
- \* Browser wheel supported on the mouse.
- \* SpeedScreen3.
- \* Serial port redirect.
- \* High color support.
- \* Citrix Nfuse and Pnlite support.

### Microsoft RDP version 5.1 protocol.

- \* Auto login.
- \* Local printer support.
- \* Audio .
- \* Serial port redirect..
- \* High color.

## Internet terminal

### Browser Internet Explorer 6.0

- \* Favorites.
- \* Print screen.
- \* HTTPS protocol. 128 bits encryption. SSL (Versions 1,2 and 3) support.
- \* TLS support.
- \* Cookies.
- \* Dynamic HTML and CSS format support.
- \* Microsoft JScript, Microsoft VBScript, Microsoft Visual Basic Scripting Edition, Microsoft Active X, support.
- \* JPEG, GIF et XMB formats support
- \* Windows Media Player.
- \* Proxy access support.
- \* Java Virtual Machine.
- \* Lotus I-Notes support.

## Other functionalities

### Printing flexibility.

- \* AS/400, Mainframes, HP9000, UNIX hosts, PCs running Windows NT, 2000, XP, Linux can direct their printouts to the OmniTerm/XPe connected printer using the LPR/LPD protocol.

### Network connection flexibility.

- \* OmniTerm/XPe can use either a wire or a WiFi connection. WiFi connections can be achieved either with a PCMCIA card (the optional PCMCIA slot is needed) or with a WiFi USB device.
- \* The WiFi protocols 802.11a, 802.11b and 802.11g are supported.

### Flexible choice of peripherals.

- \* USB external memory "sticks".
- \* USB floppy drive.
- \* USB ZIP drive.
- \* USB CD drive.
- \* USB printers (ICA/RDP/Browser).
- \* Parallel printers.
- \* Serial printers .
- \* USB keyboard.
- \* USB mouse.
- \* USB trackball.
- \* USB bar code scanner.
- \* PS2 bar code scanner.

## Remote configuration services

ORCA, remote management and configuration software.

- \* Save configuration images.
- \* Update configuration images.
- \* Copy configuration images.
- \* Manage groups.
- \* Explore subnetworks.
- \* force unit to reboot.
- \* Send messages to users or groups of users.
- \* Automatically maintain an assets management database.
- \* Wake on LAN.
- \* Remote control of XPe units.

## Hardware

Processor : VIA C3 at 677 MHz.

Display : Integrated Trident 3D Blade board.

SDRAM memory : 3,3 V : 256 MB expandable to 512 MB.

Storage memory : 256 MB Disk On Module (DOM) IDE compatible.

Parallel port : one DB25 connector Centronics compatible.

Serial port : one DB9 connector up to 115 200 bauds.

Mouse port : one PS2 port.

USB port : two type A ports.

Ethernet port : 10/100 Mbps.

PCMCIA : one optional PCMCIA slot.

## Multimedia

Maximum resolution : 1280 x 1024 – 8 Bpp/16Bpp/32Bpp  
(256 colors/Hi Color/True Color).

Refresh rate : up to 85 Hz.

Audio output : 16 bits stereo, FM synthesis.

Microphone input : 8 bits.

Audio jacks : Line-In, Line-Out, Microphone-In.

## Physical specifications

OmniTerm/XPe' s rugged double case (metal and plastic) is designed to stand vertically or to be placed under the monitor.

Internal power supply.

Dimensions (H x W x D) : 23,5 x 5,5 x 22 cm.

Weight : 2 kg.

## Environment

Temperature :

\* Operating : 5°C à 40°C.

\* Storage : -40°C to 60°C.

Relative humidity:

\* Operating : 20% à 80%.

\* Storage : 5% to 90%.

Noise level : 0 dB.

## Power requirements

Voltage : 100 to 240 V AC.

Frequency : 50 to 60 Hz.

Power consumption : 15 W.

## Certifications

FCC Class A, UL, CE, TÜV



## Available from Nlynx

15" or 17" analog monitors.

LCD monitor.

105-key PC keyboard or Nlynx Multi Host 122-key keyboard.

MagTek magnetic stripe reader.

Bar code scanner



4th Floor, The Graftons, Stamford New Road, Altrincham, Cheshire. WA14 1DQ  
Tel : +44 (0) 161 928 7014 Fax : +44 (0) 161 928 7015

[www.nlynx.co.uk](http://www.nlynx.co.uk)  
[sales@nlynx.co.uk](mailto:sales@nlynx.co.uk)