



**Nlynx Ltd**  
 4th Floor, The Graftons  
 Stamford New Road  
 Altrincham, Cheshire  
 WA14 1DQ  
 United Kingdom  
 Tel: +44 (0) 161 928 7014  
 Fax: +44 (0) 161 928 7015  
 www.nlynx.co.uk

## eProManager – Remote administration software

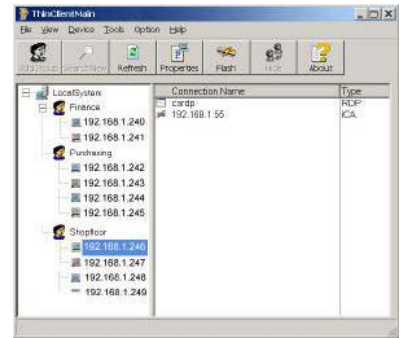
eProManager from Nlynx is part of a total solution designed to help IT managers control the costs and complications of the modern client/server network. Where the MinIT Thin Clients provide cost effective access to your hosts and servers, the eProManager software provides the method for managing these resources.

eProManager is a powerful, yet easy to use, management tool that gives the user sophisticated administration capabilities for monitoring and managing all the Nlynx MinIT Thin Clients in the organization.

eProManager simplifies the day to day tasks of the network administrators by centralizing all of the aspects of administration thus reducing the overall cost of ownership.

Administrators can instantly visualize the configuration of each MinIT device, including the serial numbers, MAC and IP addresses, the firmware and BIOS versions, the RAM and flash memory sizes.

Firmware upgrades, configuration changes are centralized and can be done either individually or by group of devices. Additionally the administrator can take complete control of a remote unit to aid in problem resolution or to demonstrate operational methods to the end user.



### Pre-requisites:

Hardware requirements	<ul style="list-style-type: none"> <li>• Pentium III class CPU or greater</li> <li>• Minimum of 256MB RAM</li> <li>• 13MB of available hard disk space</li> </ul>
Software compatibility	<ul style="list-style-type: none"> <li>• Microsoft Windows Vista</li> <li>• Microsoft Windows XP or 2000 Professional</li> <li>• Microsoft Windows Server 2000 or 2003</li> </ul>

### Features:

Ease of use	<ul style="list-style-type: none"> <li>• Intuitive user graphical interface           <ul style="list-style-type: none"> <li>◦ Display MinIT by location, subnet, or group</li> <li>◦ Fully featured, no additional modules to purchase</li> </ul> </li> <li>• Uses industry standard protocols</li> </ul>
Fast device discovery	<ul style="list-style-type: none"> <li>• MinIT devices are automatically discovered on the LAN/WAN           <ul style="list-style-type: none"> <li>◦ Discovery works across multiple subnets</li> <li>◦ No manual device configuration required</li> </ul> </li> </ul>
Device details at a glance	<ul style="list-style-type: none"> <li>• IP address, MinIT version number, MAC address etc</li> </ul>
Device configuration	<ul style="list-style-type: none"> <li>• Setup operating parameters</li> <li>• Create a custom configuration for one or multiple devices</li> <li>• View or upload configuration parameters from any device</li> <li>• Download configuration parameters to any single or group of MinIT devices on the network</li> <li>• Remotely change the configuration of a single OmniTerm device</li> </ul>
Image deployment, cloning and upgrades	<ul style="list-style-type: none"> <li>• Image copy / cloning for one or many devices</li> <li>• Firmware upgrades performed manually or automatically</li> <li>• Flash update any single or group of MinIT devices</li> <li>• View upgrade status for any individual device</li> </ul>
Remote control	<ul style="list-style-type: none"> <li>• Shadow / display remote devices</li> <li>• Full keyboard and mouse and video control           <ul style="list-style-type: none"> <li>◦ Help desk support</li> <li>◦ Remote troubleshooting</li> </ul> </li> <li>• Remote device Reset / Reboot</li> <li>• Wake powered-off devices using Wake On Lan (WOL)</li> </ul>
Scheduling	<ul style="list-style-type: none"> <li>• All tasks can be performed immediately or scheduled for a later date / time</li> </ul>

### Nlynx Ltd

4<sup>th</sup> Floor, The Graftons  
 Stamford New Road  
 Altrincham, Cheshire  
 WA14 1DQ  
 United Kingdom  
 Tel: +44 (0) 161 928 7014  
 Fax: +44 (0) 161 928 7015  
 www.nlynx.co.uk

Nlynx reserve the right to change or modify these specifications without prior notice. We recommend that you contact us to obtain the most recent specifications. All trademarks in this data sheet are the properties of their respective owners.