

# ***ES/TCP***

5250 over TCP/IP  
Emulation Software

## **Quick Install Guide**



This guide describes how to install and configure the ES/TCP software on your PC.

# ***N* Lynx**

*Complete Midrange Solutions*

## ***Table of Contents***

<b>INTRODUCTION .....</b>	<b>3</b>
Overview .....	3
ES/TCP Features .....	3
Typical Applications .....	4
ES/TCP .....	4
PC Requirements .....	4
<b>INSTALLING THE ES/TCP SOFTWARE.....</b>	<b>5</b>
To install the emulation software: .....	5
Configuration for Windows 3.X:.....	5
Configuration for Windows 95 and NT: .....	6
<b>RUNNING THE EMULATION.....</b>	<b>7</b>
Running ES16 TCP .....	7
Running ES32 TCP .....	7
Getting Help .....	7
<b>SALES and TECHNICAL SUPPORT .....</b>	<b>8</b>
ES/TCP Limited Warranty .....	9

## Overview

ES/TCP from NLynx provides TN5250 display and printer emulation software for both 16- and 32-bit environments over TCP/IP to your AS/400. The ES/TCP is a simple and straightforward emulation package with many features. During installation the software detects the PC operating environment and installs the appropriate emulation for Windows® 95 and Windows NT™, Windows 3.1 or Windows for Workgroups 3.11 environments.

By including both versions of software, ES/TCP provides a simple migration path. Users can start out in a Windows 3.X environment and migrate to Windows 95 later, without having to purchase any additional software.

This Quick Install Guide describes:

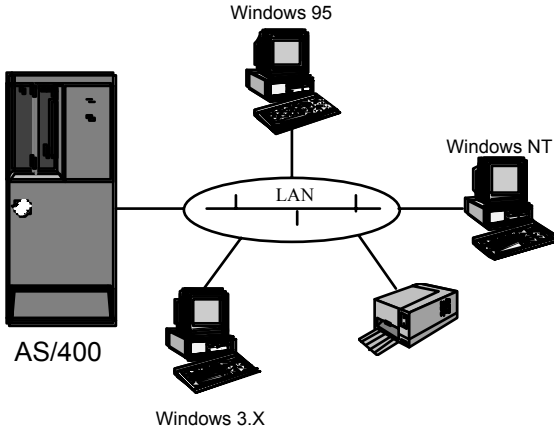
- PC requirements
- How to install the ES/TCP software
- Running emulation
- Sales and Technical Support information

## ES/TCP Features

- Easy installation and quick configuration.
- Hotspots identify host menu items and function keys.
- Custom tool bar allows users to create their own easy-to-use buttons.
- Keyboard remapping provides an easy way to customize the PC keyboard.
- Macro support (Record, Play, Pause, and Stop).
- Standard edit commands (e.g. Cut, Copy, Paste) coupled with mouse action.
- Printing emulation allows you to print to your attached printer.

## Typical Applications

# ES/TCP Configuration



## ES/TCP

### PC Requirements

- IBM PC (or compatible) with 386, 486, or Pentium® processor
- 3.5 inch floppy disk drive
- Hard disk with 5MB space available
- A minimum of 4 Mb of memory
- Windows 3.1 or higher, Windows 95 or Windows NT 3.51 (or higher)
- TCP/IP installed on the PC

### **INSTALLING THE ES/TCP SOFTWARE**

Installing the software is the same for both Windows 3.x, Windows 95, and Windows NT users. The application detects which operating system you are using and installs the appropriate version of the emulation software.

**Note:** To install the software from a server, read "Tips16.txt" for our 16 bit emulation or "Tips32.txt" for our 32 bit emulation from the Setup Disk.

#### **To install the emulation software:**

1. Run Windows on your PC if it is not already running.
2. Insert the ES/TCP Setup diskette into your PC's floppy drive.
3. If you are using Windows 3.x, choose Run from the Windows Program Manager File menu.
4. If you are using Windows 95, click the Start button and select Run.
5. At the Run command line prompt, type: **a: setup** where *a* is the floppy drive.
6. Click OK.
7. Follow the on-screen prompts as they appear.

#### **Configuration for Windows 3.X:**

1. After the message "You have successfully completed ES16 Emulation Setup!" press the OK button.
2. In the Program Manager window, double click on the ES16 TCP program group icon.
3. In the ES16 TCP program group, double click on the ES16 TCP Configuration icon.
4. Select YES to "Do you want help getting started with Customization application?" if you want to go through the HELP or select NO to go directly to the configurator screen.
5. Double click on the display icon in the ES16 TCP Configurator window.
6. In the Display Session field type in a name you wish to identify this device by.
7. In the Columns field select 80 or 132 columns.
8. In the Monitor field select Color or Monochrome.
9. In the "Enter a Host name or IP Address" field type in the AS/400 IP address.
10. Click OK.
11. The device name you chose will now be display under the display icon.
12. Click on EXIT on the tool bar.

13. Click YES to “Do you wish to save current changes?”
14. To run the emulation go to Chapter 3 "Running the Emulation".

## **Configuration for Windows 95 and NT:**

1. After the “Setup Succeeded” message appears Click OK.
2. Double click on the DISPLAY EMULATOR icon.
3. It is recommended to Click NO to the question of “Do you want to specify the password now?”
4. Click OK to the message "You have not configured any emulation devices".
5. Configuration Properties will appear select the appropriate character set and click OK.
6. In the Device Name field type in a name you wish to identify this device by.
7. Select Display for a 5250 session or Printer for 3812 printer session.
8. In the Model field select one of the following: 80 Columns-Color, 80 Columns-Monochrome, 132 Columns-Color, 132 Columns- Monochrome.
9. In the Keyboard field select one of the following: US Typewriter (default), International or World Trade.
10. DO NOT select Allow remote connection, this field is used for another ES32 package.
11. In the IP Address field under Host Configuration, type in the IP address of the AS/400.
12. Click OK, then Close, a sign-on screen should appear. If not check the AS/400 address; verify TCP/IP is configured and started on the AS/400.

# ***RUNNING THE EMULATION***

At this point, you have completed the setup of ES/TCP and are now ready to run your emulation software.

If you are running Windows 3.x, then you will run our 16-bit emulator ES16 TCP.

If you are running Windows 95 or Windows NT, then you will run our 32-bit emulator ES32 TCP.

## **Running ES16 TCP**

### **Starting a session**

1. In the Program Manager window double click on the ES16 TCP program group icon
2. In the ES16 TCP program group window double click on the ES16 TCP Emulation icon (this will start the emulation program).
3. The New Session window will appear. In the Available Session area select the device you created.
4. Click OK.
5. A sign on screen should appear. If not check the AS/400 address; verify TCP/IP is configured and started on the AS/400.

## **Running ES32 TCP**

### **Starting a session**

1. Under START, select PROGRAMS, ES32 TCP, Display Emulator.
2. A sign on screen should appear. If not check the AS/400 address, verify TCP/IP is configured and started on the AS/400.

## **Getting Help**

For help on running your emulation software, print or view the User Guide (located on the ES/TCP Setup diskette), or you can use the context sensitive on-line help, that is built into the application.

***SALES and TECHNICAL SUPPORT***

**NLynx Limited**

4<sup>th</sup> Floor, The Grafton's  
Stamford New Road  
Altrincham, Cheshire  
Great Britain WA14 1DQ  
Tel: +44 (0) 161 928 7014  
Fax: +44 (0) 161 928 7015  
<http://www.nlynx.co.uk>

## ES/TCP Limited Warranty

**Software Warranty.** NLYnx warrants that for a period of ninety (90) days from the date of purchase by the End User, its Software Products shall conform to its published specifications under normal usage. NLYNX DOES NOT WARRANT THAT THE OPERATION OF THE SOFTWARE WILL BE UNINTERRUPTED OR ERROR FREE, OR THAT ALL SOFTWARE DEFECTS WILL BE CORRECTED. In the event a Software Product fails to comply with the warranty set forth above, NLYnx will replace the product. End User must, however, return all copies of the Software, along with proof of purchase, to NLYnx within 90 days from the Software purchase date.

**Warranty Limitations.** End User's sole remedy under any Warranty provided by NLYnx shall be limited to the replacement or repair of the Product, or at NLYnx's sole discretion, a refund of the purchase price. Transportation costs in connection with the return of any Product to and from NLYnx's plant shall be paid by the End User. NLYNX GRANTS NO WARRANTY, EXPRESS OR IMPLIED, OTHER THAN THE WARRANTIES STATED ABOVE. EXPRESSLY EXCLUDED ARE THE IMPLIED WARRANTIES OF MERCHANTABILITY AND FITNESS FOR A PARTICULAR PURPOSE. IN NO EVENT SHALL NLYNX BE LIABLE FOR SPECIAL, INCIDENTAL OR CONSEQUENTIAL DAMAGES, INSTALLATION COSTS, LOST REVENUE OR PROFITS, OR ANY OTHER COSTS INCURRED AS A RESULT OF THE USE OF ANY NLYNX PRODUCT, WHETHER OR NOT USED IN ACCORDANCE WITH INSTRUCTIONS.