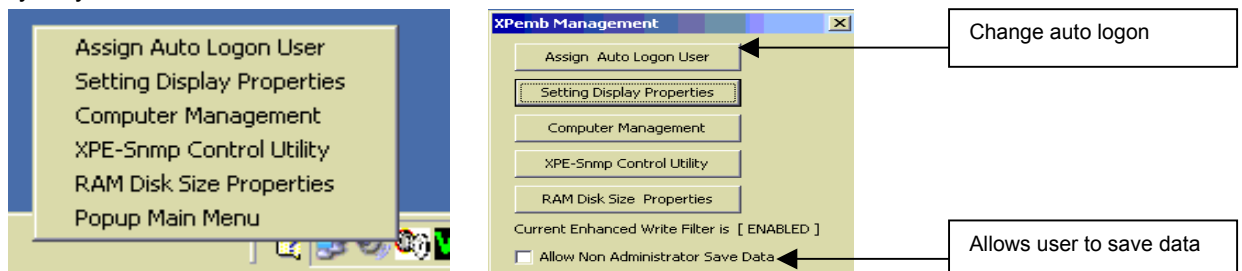


OmniTerm/X500 Quick Start Guide

- ❑ It is strongly recommended that before changes are made to the default configuration, a backup copy of the default image be made. Using ORCA management software, discover the OmniTerm/X500, then drag/drop the IP address into the "Remote Images" window. This task needs to be done one time. One backup image can be used for all terminals. The image must be saved in the default "Data" folder.
- ❑ NLYnx ORCA remote management software can be obtained from your distributor or by sending a request to sales@nlynx.co.uk. Be sure to include the part number and serial number of the terminal as part of your email.
- ❑ The default *Administrator* password is: **Administrator** (case sensitive). The default *User* password is: **User**.
- ❑ When you log in as *Administrator*, the flash drive is unprotected and changes to the device configuration are allowed. Writes are allowed to the flash drive at all times until the terminal has been restarted. For example, if you login as *Administrator*, log out, then back in as *User*, the flash is unprotected and writes are allowed. YOU MUST REBOOT to ensure the flash write protection is on. When any user other than *Administrator* logs in after a reboot, the flash is protected and no changes or writes will be saved.
- ❑ Applications can be loaded only when *Administrator* is logged in. The applications can be loaded by way of a network resource or USB mass storage device.
- ❑ The user "*User*", is automatically logged into the terminal by default. To make configuration changes, log out, then log in as *Administrator*.
- ❑ When logged into the terminal as *Administrator*, you can assign the auto logon user among other administrative tasks by right clicking on the "key-in-lock" icon on the systray.



- ❑ Wireless PCMCIA cards and other PCMCIA cards are supported when the appropriate Windows XP drivers and software are installed. Drivers must be installed via a network resource or USB mass storage device. The Z: RAM drive may be used to temporarily store installation or other files.
- ❑ Drivers for all other peripheral hardware including USB, Serial, etc. are supported when the appropriate Windows XP drivers and software are installed. Drivers must be installed via a network resource or USB mass storage device. The Z: RAM drive may be used to temporarily store installation or other files.
- ❑ Network and domain configuration is performed in the same manner as Windows XP Professional.
- ❑ The complete manual can be obtain by contacting support@nlynx.co.uk.